



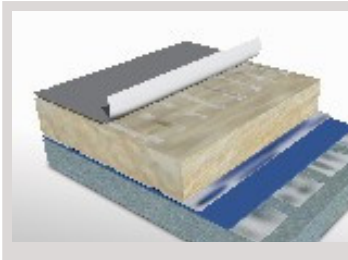
the knowledge to produce solutions



# Total Roofing Solutions



# designed for architects - developed for installers



## Adhered Roof System

### Preparation

'Single Ply Membrane' – Renolit SPM, AlkorPlan FB or AlkorBright FB - 1.8mm, 2mm and 2.5mm available

### Installation

By trained Single Ply Membrane trained applicator

### Insulation

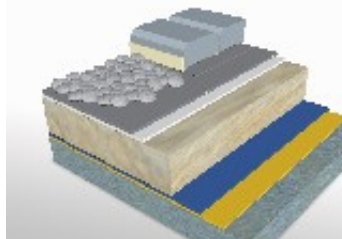
Available in DCT GA300 XPS or DCT Silver PIR, flat or tapered board systems

### Separation layer

VCL and Separation layer, should be Proctor Geo-Vap120 (VCL) and ProctorGeo IRMA (separation layer)

### Total R-Value Above Slab R-Value

R values, design and technical information – Call DCTech and quote 'flat roofing systems'



## Ballasted Roof System

### Preparation

'Single Ply Membrane' – Renolit SPM, AlkorPlan FB or AlkorBright FB - 1.8mm, 2mm and 2.5mm available

### Installation

By trained Single Ply Membrane trained applicator

### Insulation

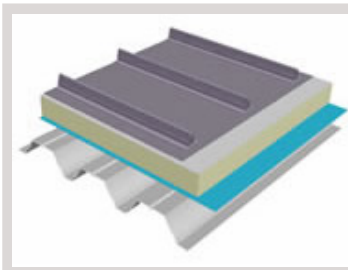
Available in DCT GA300 XPS or DCT Silver PIR, flat or tapered board systems

### Separation layer

VCL and Separation layer, should be Proctor Geo-Vap120 (VCL) and ProctorGeo IRMA (separation layer)

### Total R-Value Above Slab R-Value

R values, design and technical information – Call DCTech and quote 'flat roofing systems'



## Design Roof System

### Preparation

'Single Ply Membrane' – Renolit SPM, AlkorPlan FB or AlkorBright FB - 1.8mm, 2mm and 2.5mm available

### Installation

By trained Single Ply Membrane trained applicator

### Insulation

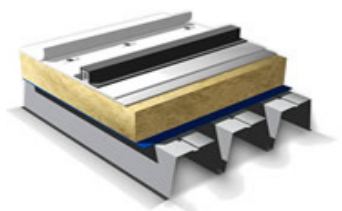
Available in DCT GA300 XPS or DCT Silver PIR, flat or tapered board systems

### Separation layer

VCL and Separation layer, should be Proctor Geo-Vap120 (VCL) and ProctorGeo IRMA (separation layer)

### Total R-Value Above Slab R-Value

R values, design and technical information – Call DCTech and quote 'flat roofing systems'



## Solar Roof System

### Preparation

'Single Ply Membrane' – Renolit AlkorBright – 2.5mm Available

### Installation

By trained Single Ply Membrane trained applicator

### Insulation

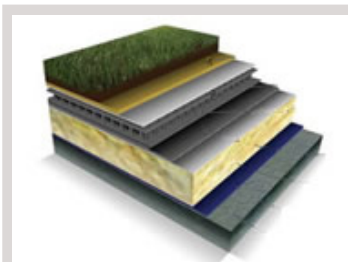
Available in DCT GA300 XPS or DCT Silver PIR, flat or tapered board systems

### Separation layer

VCL and Separation layer, should be Proctor Geo-Vap120 (VCL) and ProctorGeo IRMA (separation layer)

### Total R-Value Above Slab R-Value

R values, design and technical information – Call DCTech and quote 'flat roofing systems'



## Green Roof System

### Preparation

'Single Ply Membrane' – Renolit SPM, AlkorPlan FB or AlkorBright FB - 1.8mm, 2mm and 2.5mm available

### Installation

By trained Single Ply Membrane trained applicator

### Insulation

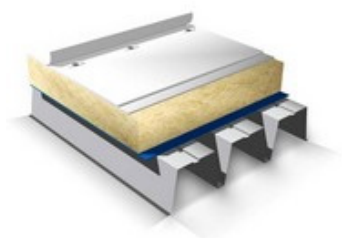
Available in DCT GA300 XPS or DCT Silver PIR, flat or tapered board systems

### Separation layer

VCL and Separation layer, should be Proctor Geo-Vap120 (VCL) and ProctorGeo IRMA (separation layer)

### Total R-Value Above Slab R-Value

R values, design and technical information – Call DCTech and quote 'flat roofing systems'



## Mechanically Fastened Roof System

### Preparation

'Single Ply Membrane' – Renolit SPM, AlkorPlan FB or AlkorBright FB - 1.8mm, 2mm and 2.5mm available

### Installation

By trained Single Ply Membrane trained applicator

### Insulation

Available in DCT GA300 XPS or DCT Silver PIR, flat or tapered board systems

### Separation layer

VCL and Separation layer, should be Proctor Geo-Vap120 (VCL) and ProctorGeo IRMA (separation layer)

### Total R-Value Above Slab R-Value

R values, design and technical information – Call DCTech and quote 'flat roofing systems'

*In an ever demanding construction market, DCTech Flat Roofing Solutions, offer full technical support and information for Single Ply Membranes with all types of uninsulated and insulated (Flat and Tapered DCTech PIR or DCT GA XPS insulation) for total flat roofing systems on Timber, Concrete or Metal substrates, to give true longevity of performance.*

# realisation of architectural expression



## SEPARATION LAYER

Description: ProctorGeo IRMA  
Application: Vapour permeable separating and water control layer for use in Inverted Roof Membrane Assembly (IRMA) System  
Colour: Dark Grey

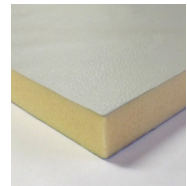
Width x Length: 3.0m x 50m (150m<sup>2</sup>)  
Nominal Thickness: mm  
Resistance to water penetration: Class WI  
Flexibility at low temperature: -20°C  
Tensile strength after artificial ageing MD/CD: ≥170/100 N/5cm  
Resistance to tearing MD/CD: ≥60/70N  
Resistance to the effect of lime water, sodium, chloride solution and sulphurous acid: Pass  
Hydrostatic Pressure: ≥2.5m



## Vapour Control Layer

Description: ProctorGeo Vap120 is a light duty vapour retarder and convection barrier.  
Application: Vapour permeable separating and water control layer  
Colour: Blue material printed in black

Width x Length: 1.5m x 30m (45m<sup>2</sup>)  
Resistance to water penetration: 49MN.s/g  
Vapour Barrier Classification: AS4200.1  
Water Barrier: High  
Tensile Strength: AS 1301.448  
Flammability Index: AS/NZ 1530 Part 2



## DCT PIR SILVER

Description: Polyisocyanurate (PIR) thermal insulation  
Application: Residential, industrial and agricultural buildings  
Finish: Rigid Polyisocyanurate (PIR) foam core board, faced on both sides with a smooth multi-layer coated aluminium foil.

Edge Profile: Square edge  
Width: 1200mm  
Length: 2400  
Nominal Thickness: 25mm up to 120mm  
Nominal thickness to R-Value: 0.023 W/mK  
Compressive Strength: ≥150kPa  
Core volume weight: ±30kg/m<sup>3</sup>  
Water absorption: <2%  
Fire Classification: FM 4880

Description: Sand



## DCT GA 300

Description: Extruded polystyrene (XPS) thermal insulation  
Application: Commercial and residential floors, walls and roofs  
Finish: Non-porous, closed cell XPS, surface skin  
Colour: Sand

Edge Profile: Tongue and groove  
Width: 600mm  
Length: 2500mm  
Nominal Thickness: 25 up to 120mm  
Nominal thickness to R-Value: 0.028 W/mK  
Compressive Strength: ≥300kPa  
Core volume weight: ± kg/m<sup>3</sup>  
Water absorption: ≤0.7%  
Fire Classification: ASD1530.3

Thickness to R-Value DCT GA 300™ @ 24°C		Thickness to R-Value DCT PIR WHITE SILVER TISSUE	
Thickness (mm)	DCT GA 300™ R-Value (m <sup>2</sup> K/W)	Thickness (mm)	0.023 w/Mk
25	0.9	25	1.1
30	1.0	30	1.3
40	1.3	40	1.7
50	1.8	45	1.96
75	2.7	50	2.2
80	2.9	60	2.6
90	3.2	70	3.0
100	3.6	80	3.5
120	4.3	100	4.4

**"FOR A TOTAL FLAT ROOF SOLUTION"**  
Please call DCTech on 1800 051 100

# about dotech

Dynamic Composite Technologies, or as we are now known DCTech, has been serving the Australian building industry with an extensive portfolio of technically advanced thermal insulation, geotextile membranes, rainscreen cladding brackets and fibreglass reinforced plastic wall and ceiling liner panels - which have been tried and tested to Australian building codes and standards.

This diverse portfolio provides DCTech with the ability to consider the building envelope holistically and hence develop a 'total system solutions' for a wide range of building applications. DCTech total system solutions incorporate high-performance building materials and innovative solutions which are designed to meet the continuously evolving requirements of the Australian building industry.

DCTech total system solutions address the risk of interstitial condensation, affords BCA, NCC and Greenstar compliant thermal efficiency and optimum acoustic and fire performance.

Ensure you specify the right system for the right application, look for the orange 'Powered by DCTech' stamp of approval.



Dynamic Composite Technologies Pty Ltd

## Sydney Office

Unit 8, 171-175 Newton Rd  
Wetherill Park NSW 2164  
T (02) 8788 9555  
F (02) 9604 7468  
E nsw@dotech.com.au

## Melbourne Office

12 Agosta Drive  
Laverton North VIC 3026  
T (03) 9369 7920  
F (03) 9369 4043  
E vic@dotech.com.au

## Qld Office

Chevron Island LPO  
PO Box 204  
Chevron Island QLD. 4217  
T 0409 424 517  
E qld@dotech.com.au

## Western Australia

Williams Road  
Kelmescott WA 6111  
T 1800 051 100  
E wa@dotech.com.au

**E sales@dotech.com.au T 02 8788 9555 Freecall: 1800 051 100**

the knowledge to produce solutions