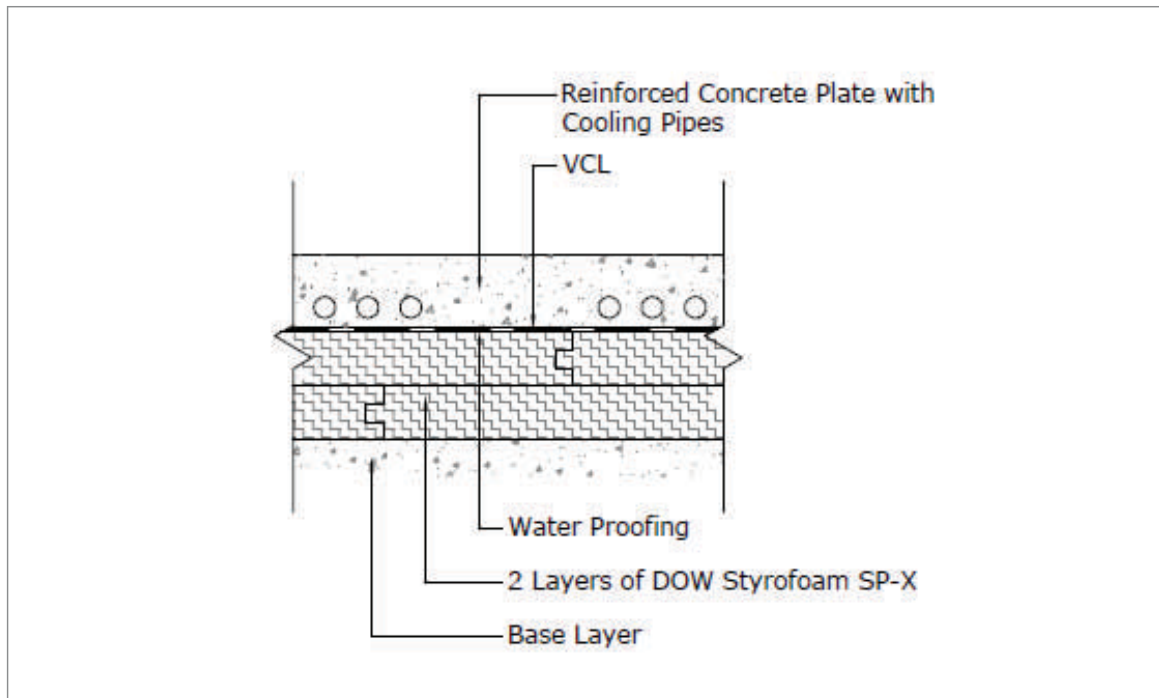


CF007a

cold store floor Dow Styrofoam SP-X



- Material:** 150mm Dow Styrofoam SP-X. Styrofoam SP-X applied in two layers of 75mm thick boards, is an example of a product which complies with this rigid insulation performance criteria.
- Location:** Dow Styrofoam SP-X is laid directly onto level slab. In addition, Styrofoam SP-X can be placed vertically around the edge of the slab inside the formwork.
- Specification :** Minimum compressive strength not less than 350 kPa. Average compressive.
- Clause:** Strength values of 350kPa will not comply.
Smoke Developed (AS 1530.3) < 5
- Material R-Value:** R5.4