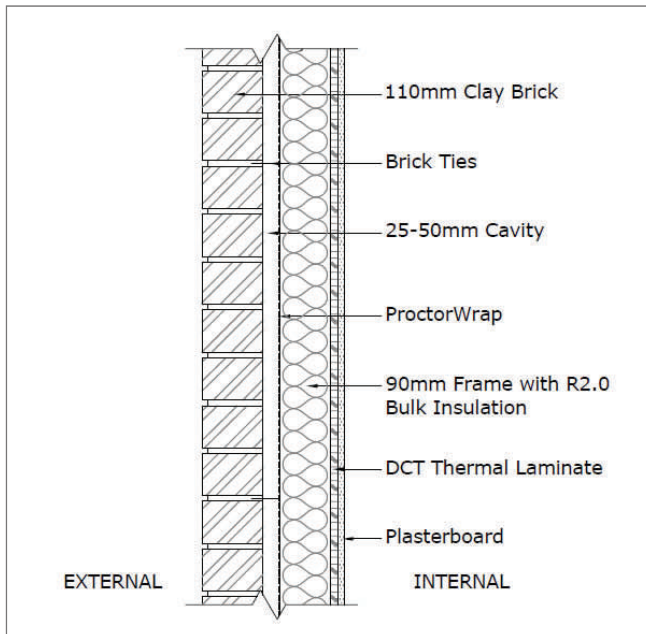


CW003a

thermal laminate—retro fit applications

Proctor Wrapshield AT DCT Thermal Laminate



General

Location: To the inner masonry or framed skin (occupant side).

Material

Insulation: Rigid Cellular Foam board equal to DCT Thermal Laminate

Product: DCT Thermal Laminate

Total R-Value: [Complete]

Fixing: Daub and screw fix

Installation: Fix DCT Thermal Laminate to the inside of frame. To DCT printed details.

Sarking: Wrapshield Air Tight (AT) is an air tight three layer spun bonded polypropylene breathable sarking membrane with a vapour resistance of less than 0.27MN.s/g. Breather foil does not comply with this specification.

Thermal Laminate – used in high moisture environments
Thermal Laminate Plus- used in projects where space is limited and moderate indoor humidity
Thermal Laminate Super- used in areas where a both space and thermal efficiency is required.

There are a large number of factors that need to be considered in assessing and managing condensation risk. Such factors include the local climate, building use, position, thickness and type of insulation, position and integrity of vapour barriers, and the degree and location of mechanical or passive ventilation. It is highly recommended that designers undertake a condensation risk analysis.