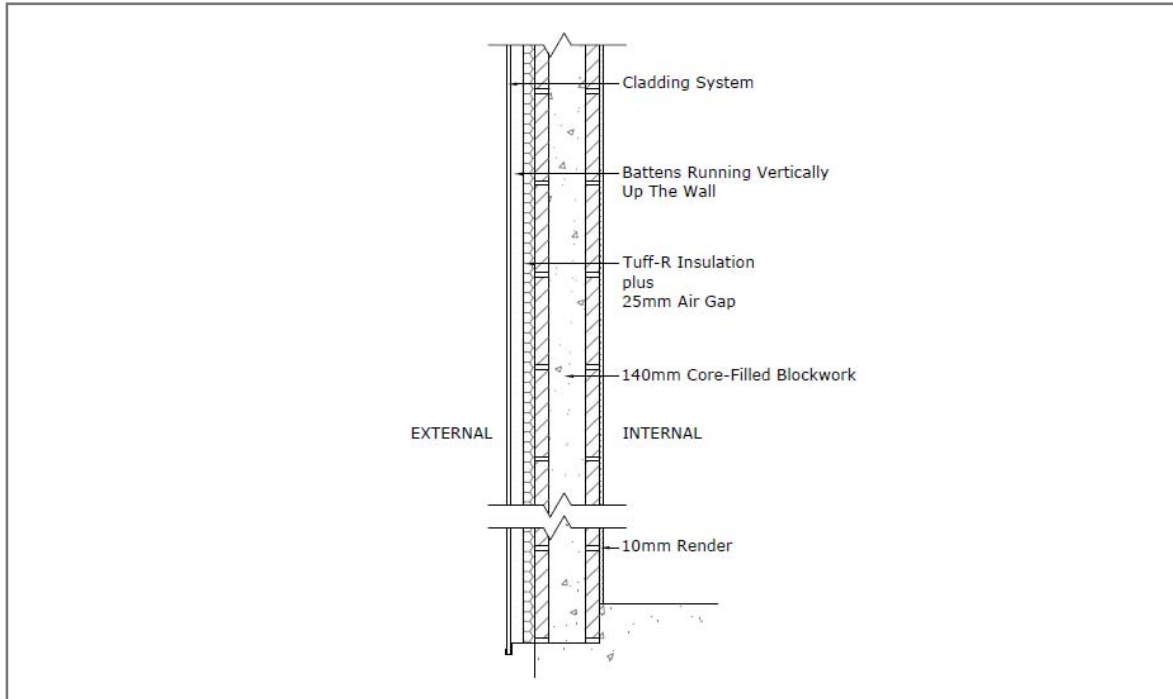


CW006b

internally insulated masonry wall Dow Thermax LD or Tuff-R



General

Location: External wall

Material

Insulation: DOW Tuff-R or Dow Thermax LD

Total R-Value: [Complete]

Support & Fixing: fit insulation board between brackets holding external cladding system frame, using two mechanical fixings per board and DCT recommended adhesive. Tape joints.

Flashings: Install flashings prior to installing board. Prevent entry of water behind the insulation boards.

There are a large number of factors that need to be considered in assessing and managing condensation risk. Such factors include the local climate, building use, position, thickness and type of insulation, position and integrity of vapour barriers, and the degree and location of mechanical or passive ventilation both in the roof space and the interior. It is highly recommended that designers undertake a condensation risk analysis.