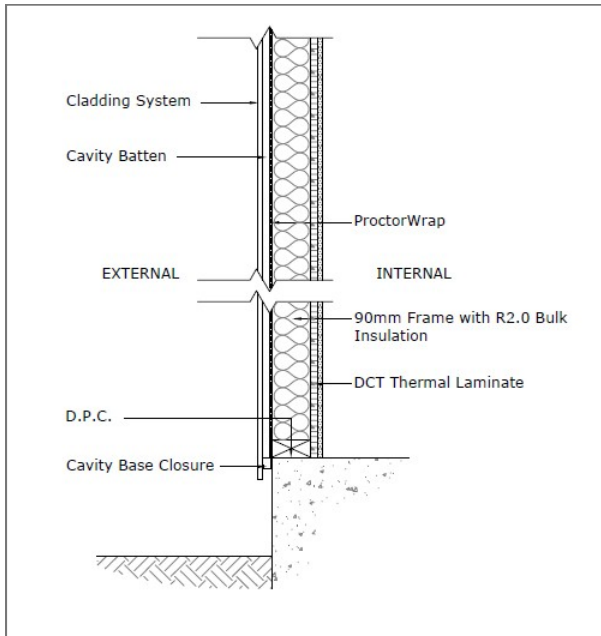


RW001a

## internally insulated metal frame wall ProctorWrap DCT Thermalcheck



### General

Location: External wall

### Material

Sarking Membrane: ProctorWrap Vapour permeable (breathable) membrane with vapour resistance of not more than 0.26MNs/g.

Insulation: Approved [glass/polyester] batts

Total R-Value: [Complete]

Support & Fixing: Tightly fit batts between studs. Extend to roof line in gable walls. Fix breathable membrane to outside of frame with 150mm overlaps in accordance with AS4200.2 and the product user guide.

Flashings: Install flashings prior to installing sarking. Prevent entry of water behind the insulation boards.

Vapour Barrier: Fix DCT Thermal Laminate to underside of frame [12.7mm Tuff-R + [Size]mm Plasterboard]

A well installed vapour barrier may also be required in some cold climates and/or high humidity buildings. DCT recommends that a condensation risk analysis is undertaken to determine if required.

There are a large number of factors that need to be considered in assessing and managing condensation risk. Such factors include the local climate, building use, position, thickness and type of insulation, position and integrity of vapour barriers, and the degree and location of mechanical or passive ventilation. It is highly recommended that designers undertake a condensation risk analysis.